

## DEVELOPING MANAGED LANES

2000 Transportation Short Course  
11 October 2000  
Beverly T. Kuhn, Ph.D., P.E.

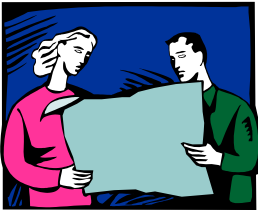


## MANAGED LANES

- Offer peak-period free-flow travel to certain user groups
  - High occupancy vehicles
  - Trucks
  - Toll-paying vehicles
  - Transit



## PLANNING MANAGED LANES



## Managed Lanes Policy

- What is the community's and your agency's policy regarding mobility?
- Helps determine how to proceed with managed lanes



## User Groups

Who will use the facility?

HOV



HOT



Other



Trucks



Transit



## Operational Scenarios

- Based on user groups
  - Design alternatives
  - Operational impacts
  - Performance data
  - Desirability to users



## Legislative Issues



- Unique operating scenarios may require changes
- Necessary to enable, support, and enforce managed lanes

## Funding and Financing

- Innovative
- Use of toll revenues
- Retrofit vs. new
- Private vs. public
- Construction and operations



## Stakeholder Buy-in

- Develop an acceptable climate for successful introduction of managed lanes
- Need buy-in of those affected
  - Community
  - Various agencies that will operate and enforce

## DESIGN OF MANAGED LANES



## Geometric Design



- Location & design
- Interchanges
- Entrances and exits
- Sufficient ROW
- Infrastructure
- TMC Issues

## User Information

- Any information necessary to make appropriate decisions
  - Entrance / exit location
  - Restrictions
  - Operation hours
  - Toll schedules
- Meet needs of stakeholders



## Public Awareness

- Supports operational success
- Minimizes confusion
- Ensures support of project



## Traffic Control Devices

- Provides key operational information to user
- Critical for safety and efficiency
- Components
  - signs
  - pavement markings
  - delineation



## OPERATIONS AND ENFORCEMENT



## Incident Management

- Agencies involved
- Needs related to specific role
- Institutional and technical challenges
- Matrix of strategies



## Interoperability

- Existing technologies interoperable with potential future ones
  - Communications capabilities
  - Infrastructure requirements
- Provide for flexibility and expansion

## Interim Use

- Potential use during special situations
  - lengthy construction
  - special events
  - emergencies (e.g., natural disasters)
- Strategies based on users and mobility policy

## Evaluation and Monitoring

---

- Maintain high level of service
- Identify measures of effectiveness
- Timeline for success

## Staffing and Training

---



- Adequate oversight of operations
- Satisfactory customer service
- Function of operational scenario and use of advanced technologies

## Decision Matrix

---

- Operating strategies based on user groups
  - Flexibility of design
  - Time of day variations
  - Compatibility of users
- Tool to make informed decisions regarding design and operations

## Final Remarks

---

- Managed lanes a complex issue
- Can work to solve mobility problems
- Planning critical to successful operations

